

DAM-3026D

User's Manual



Beijing ART Technology Development Co., Ltd.

DAM-3026D Module

Introduction

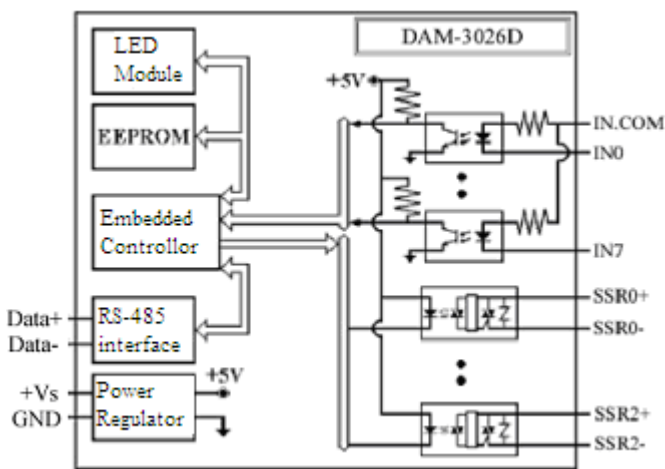
Features

8-channel Isolated Digital Output/ 3-channel Relay Output Module

- Input: 8SE (common cathode)
 - High Level: 4V~30V
 - Low Level: 0V~1V
- Output: 3-channel A-type solid state relay/power relay
- Contact Capacity: 240V_{AC} @1A
- Relay Switch-on Time: 6ms
- Relay Disconnect Time: 3ms
- Isolated Voltage: 3750V
- Support double watchdogs
- LED indicate input/output status
- Power Supply: unregulated +10~+30V_{DC}
- Power Consumption: 1.3W@24V_{DC}

Industrial Design

DAM-3026D was designed to use in industrial environment. It can be installed in standard DIN rail inside the cabinet. And it can be powered by unregulated 10V_{DC} ~30V_{DC} to meet the various power supplied source in field. It also withstands ambient temperature up to 60°C and resists the effects of vibration and mechanical shock.



Wiring & Installation

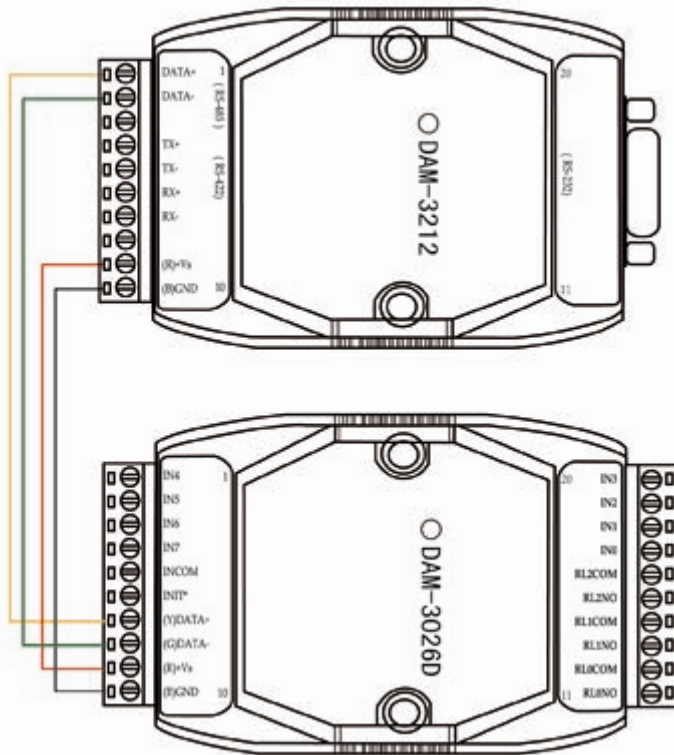
Power supply requirements: unregulated +10V_{DC} ~ +30 V_{DC}. "+Vs" is a positive, and "GND" is ground.

"DATA +" and "DATA-" connect with "DATA +" and "DATA-"(or "A" and "B") of RS-232/RS-485 transformation module, then connect transformation module with computer, do not hot plug carefully. The power indicator flashes after wiring is correct, then you can communication with the host computer.

According to the label directs color to wiring:

- | | |
|---------------|------------------|
| +Vs (R) Red | DATA+ (Y) Yellow |
| GND (B) Black | DATA- (G) Green |

It can connect with DAM-3212, show as the following:



DAM-3026D

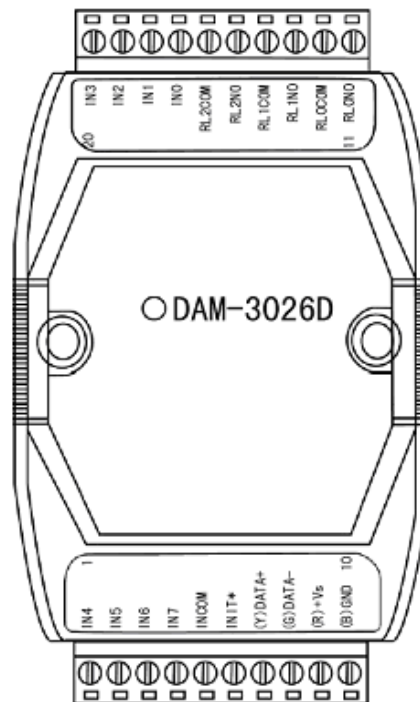


Fig. 1 DAM-3026D Drawing

DAM-3026D can be installed in standard DIN rail inside the cabinet, it also can be installed by stacking mode.

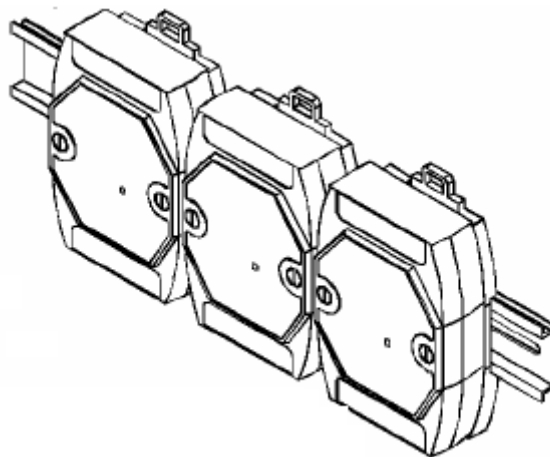


Fig.2 standard DIN installation

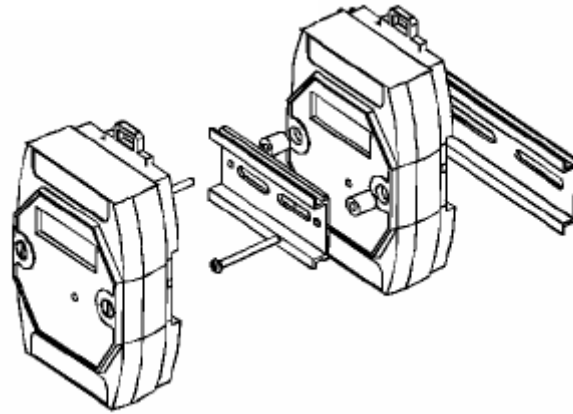


Fig.3 stack installation

Wiring Application

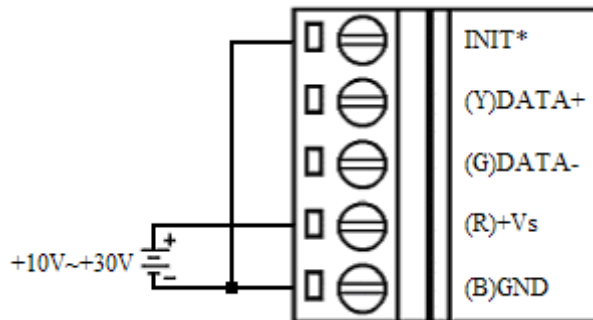
Reset Connection:

Shorted the INIT * and GND shorted, add +10 ~ +30 VDC between +Vs and GND, power on, the module indicator quickly flashes three times, power off until the indicator stops flashing, disconnect the INIT * and GND, then reset the module has been completed.

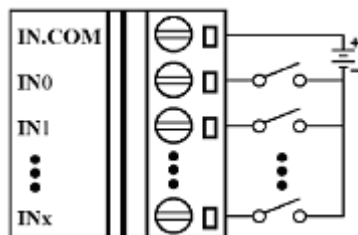
After reset successfully, the module restore the factory default values:

Module Address: 1

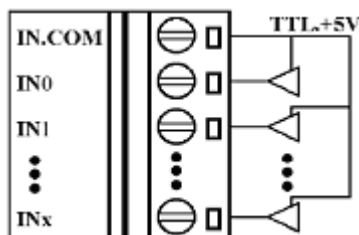
Baud Rate: 9600



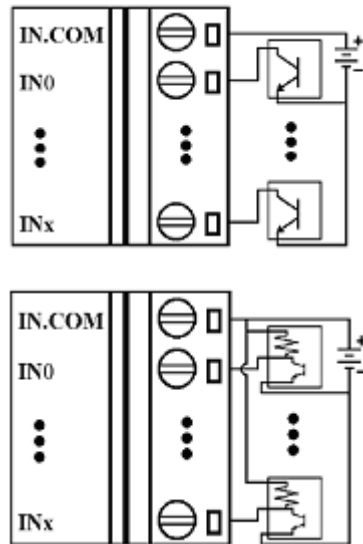
Wet Contact Signal Input



TTL/CMOS Signal Input

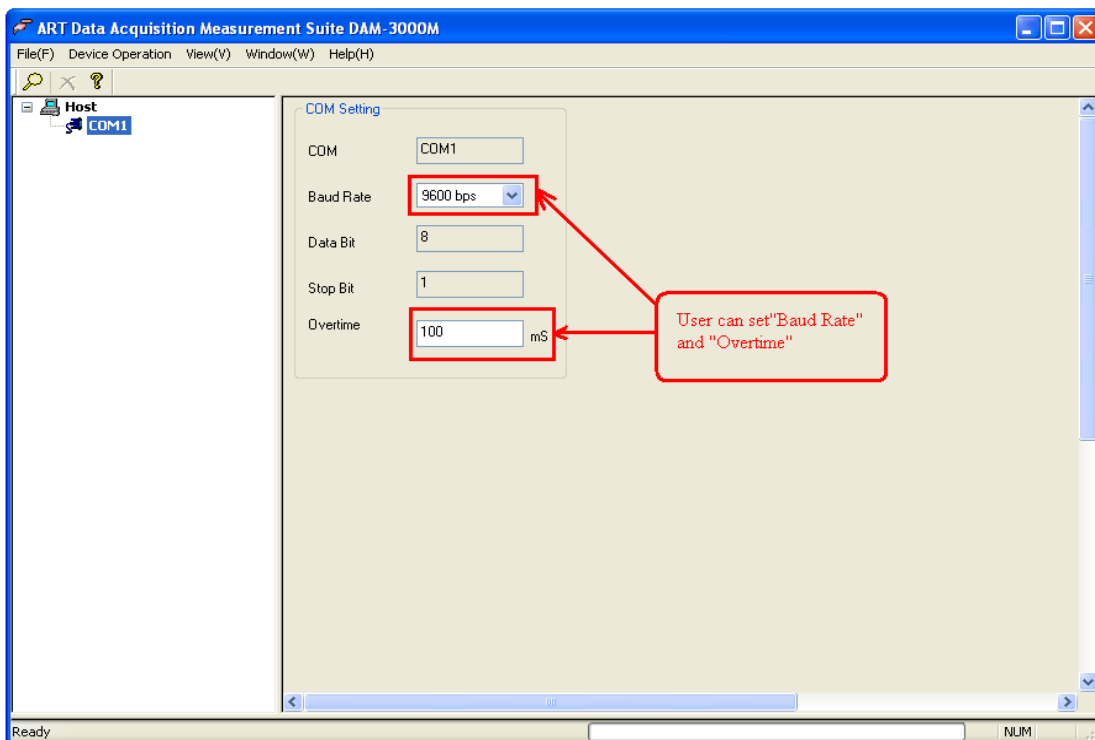


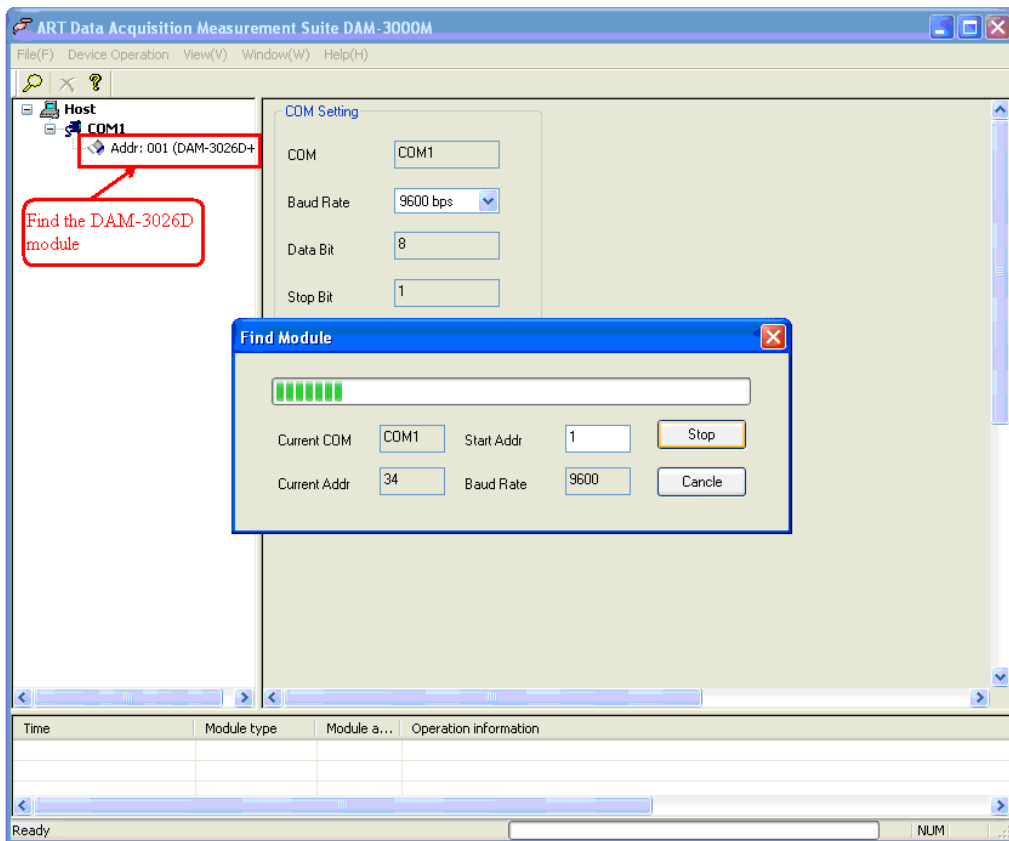
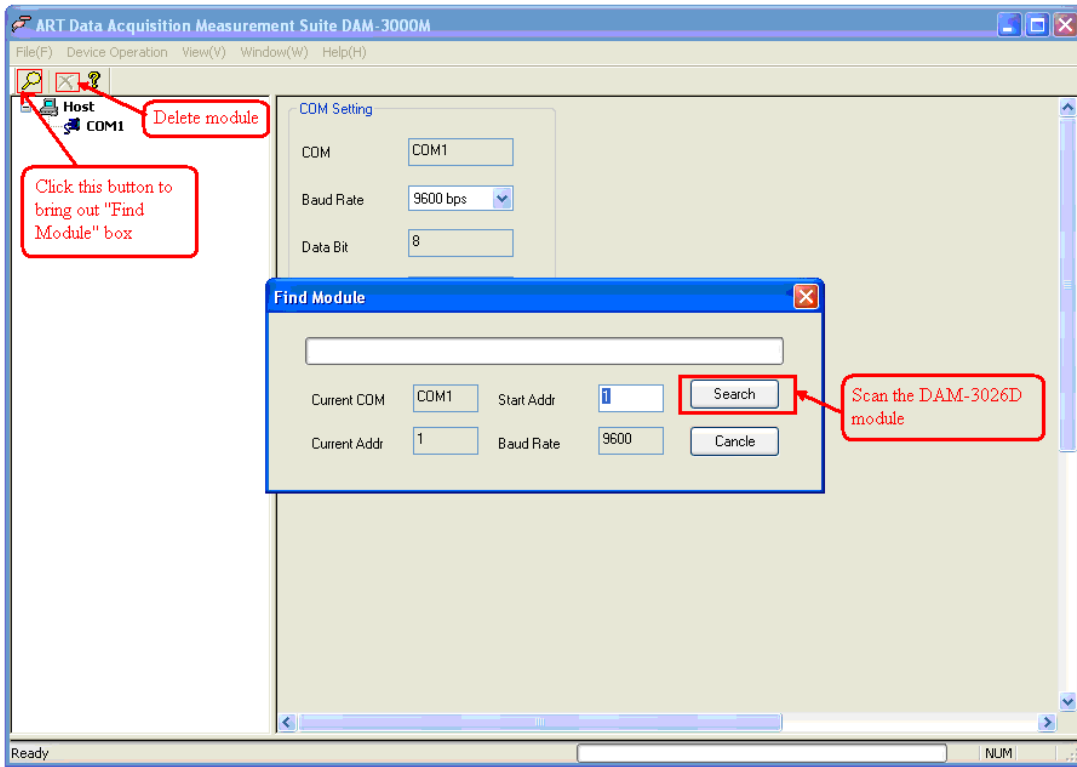
Open-collector Signal Input



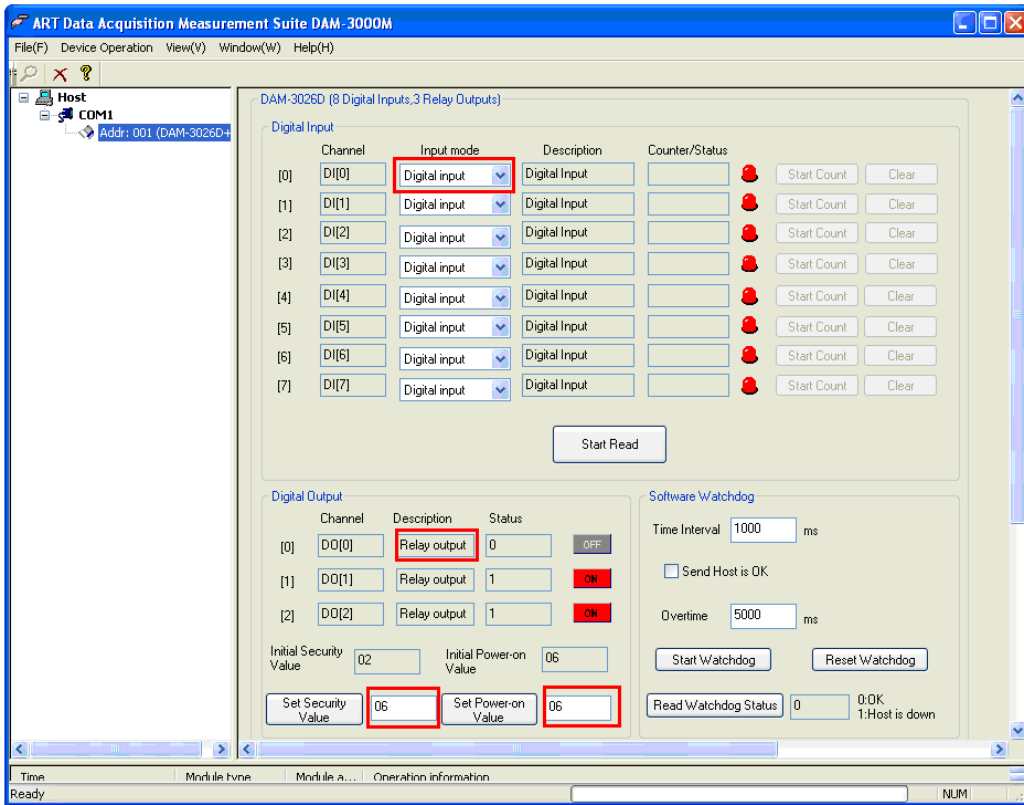
Operation Interface

Open the DAM-3000 Software, clicking the “COM1” in the system tree of left dialog block

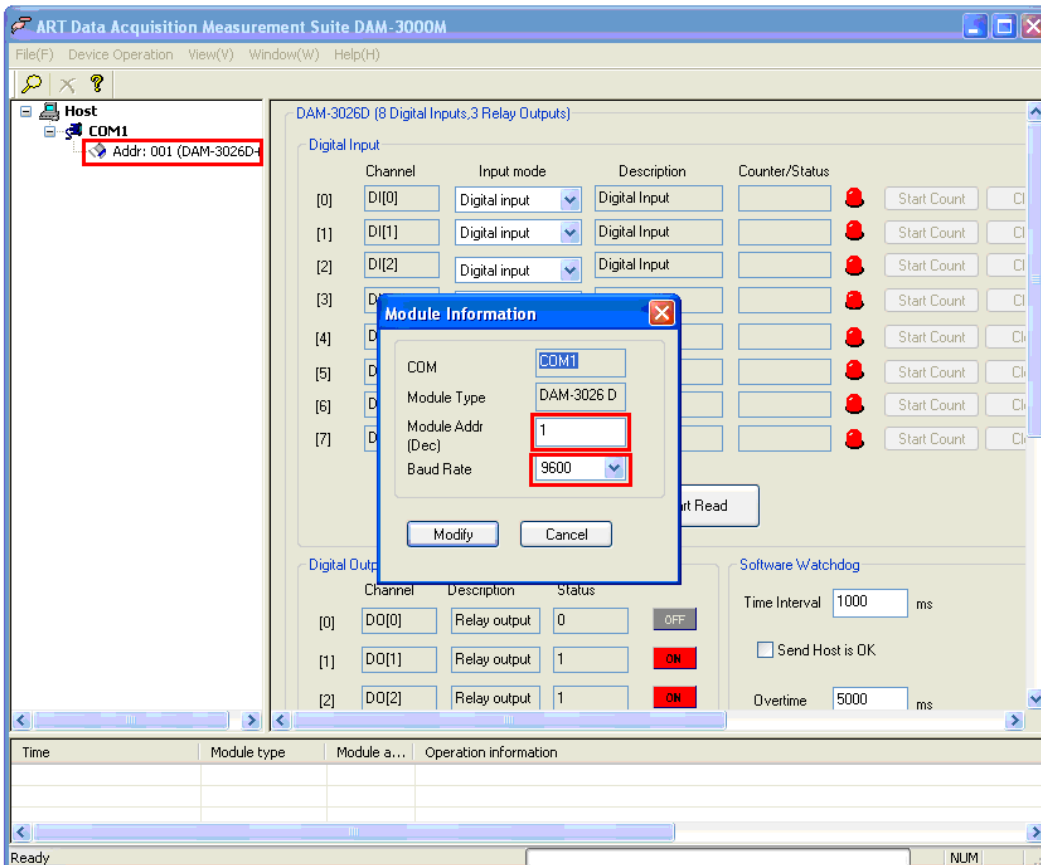




Clicking the “Addr: 001 (DAM-3026D)” in the system tree of left dialog block to go to DAM-3026D configuration page. In this page, user can configure the input channel and output channel.



Doubleclick the “Addr: 001 (DAM-3026D)” in the system tree of left dialog block to get “Module Information” box, in this box, we can set “Module Addr” and “Baud Rate”.



Default Setting

If the module's address or baud rate is wrong, or forget the last modified value, the module can be reverted to default settings. Steps: Short-circuit the "INIT*" and "GND" when there is no power; power-on for 3 seconds, power off, disconnect "INIT*" and "GND". The module is reverted to the default settings.

- ✚ Address: 00
- ✚ Baud Rate :9600bps
- ✚ Noparity
- ✚ The serial port default work mode: parity bit: none
data bits: 8
stop bit: 1

Code Configuration Table

Baud Rate Configuration Code Table

Code	00	01	02	03	04	05	06	07
Rate	1200	2400	4800	9600	19200	38400	57600	115200

Pin Definition

Pin	Name	Function
1	IN4	Digital input 4-ch
2	IN5	Digital input 5-ch
3	IN6	Digital input 6-ch
4	IN7	Digital input 7-ch
5	INCOM	Digital input common terminal
6	INIT*	reset pin, connect with(B)GND, then power-on to reset
7	(Y)DATA+	RS-485 positive
8	(G)DATA-	RS-485 negative
9	(R)+Vs	DC Power Supply (+),+10~+30V _{DC}
10	(B)GND	DC Power Supply (-)
11	RL0NO	Relay output 0-ch
12	RL0COM	The common terminal of relay output 0-ch
13	RL1NO	Relay output 1-ch
14	RL1COM	The common terminal of relay output 1-ch
15	RL2NO	Relay output 2-ch
16	RL2COM	The common terminal of relay output 2-ch
17	IN0	Digital input 0-ch
18	IN1	Digital input 1-ch
19	IN2	Digital input 2-ch
20	IN3	Digital input 3-ch